



SEREFACO
CONSULTANTS LIMITED

COMPANY PROFILE BROCHURE

Since 1981

Over 100

multi-cultural professional consultants
in a wide variety of fields



INTERNATIONAL CREDIT AND AID AGENTS

"Building sustainable local capacity in countries where we operate."

Welcome!



Registered with:



Uganda

Botswana

Tanzania

Content

About Us and Vision mission	04-05
Business Values and Objectives	06-07
Core Services	08-09
Recent Projects	10-11
Sectors	12-21
Projects Portfolio	22-23

About the Company

We are thrilled to introduce you to our dynamic and innovative consultancy firm dedicated to helping businesses and communities to thrive and succeed in today’s ever-evolving market. With our vast expertise and tailored solutions, we are committed to solve problems faced by our clients

Our team of highly skilled professionals brings a wealth of industry knowledge and a fresh perspective to deliver actionable strategies and drive transformative results.

Serefaco consultants Limited (SCL) started as an engineering and consultancy division of its mother company SEREFACO Limited in 1979. The division graduated into a fully fledged independent multi – disciplinary consulting firm in 1981. The initial market of focus was on the East and Central African region. SCL later focused its operations on the entire African continent.

Besides its operations on the African Continent, SCL aims at serving clients in all regions of the world.

From our headquarters in Kampala, we work with over 100 multi-cultural professional consultants in a wide variety of fields. Besides, the permanent staff, SCL has many experts on retainer. Projects undertaken by the company are either initiated by governments, international donor agencies, international organizations or private sector operators. SCL has built strong links with foreign professional consulting organizations and individuals.

Our joint technological expertise is combined with local and foreign expert knowledge to solve problems faced by our clients. These links enable our clients to minimize high cost consultancy time without compromising the objectives and quality of their projects.



We are dedicated to helping organizations and communities thrive, achieve their goals, and create a sustainable and prosperous future.

Mission

Our mission at SCL is to empower organizations and communities to thrive by providing exceptional consulting services that drive innovation, foster sustainable practices, and deliver transformative results.

We are committed to partnering with our clients to address their unique challenges, capitalize on opportunities, and achieve their goals.

Through our expertise, dedication, and collaborative approach, we aim to:

- Create Value:**
We strive to create tangible and lasting value for our clients by delivering high-quality consulting services that exceed their expectations. We work closely with our clients to understand their needs, develop customized solutions, and provide actionable insights that drive positive change and enhance their success.
- Foster Innovation:**
We foster a culture of innovation, encouraging creative thinking and the exploration of new ideas. We embrace emerging technologies, methodologies, and best practices to provide innovative solutions that address complex challenges and drive continuous improvement.paque.
- Promote Sustainability:**
We are committed to promoting sustainable practices in all aspects of our work. We prioritize environmental stewardship, social responsibility, and economic viability in our consulting solutions. We support our clients in adopting sustainable strategies that balance economic growth with social and environmental well-being.
- Uphold Ethical Standards:**
We adhere to the highest ethical standards in our consulting practices. We maintain confidentiality, integrity, and objectivity in all our interactions and strive to earn the trust and respect of our clients, partners, and stakeholders.paque.
- Empower People:**
We value our people as our greatest asset. We invest in the professional development and well-being of our consultants, empowering them to excel in their respective fields.

Business Objectives

Our objectives are set to guide the direction of the business and performance.



Client Satisfaction:

SCL aims to provide high-quality services and deliver value to its clients. Client satisfaction is crucial for building long-term relationships and obtaining repeat business.

Expertise and Knowledge Development:

SCL invests in continuously developing their expertise and knowledge in specific industries or domains. Their objective is to stay at the forefront of trends, technologies, and best practices, ensuring they can provide the most relevant and effective solutions to their clients.

Growth and Expansion:





SCL aims for growth and expansion in order to increase their client base, expanding into new markets or industries, or diversifying their service offerings.

Thought Leadership:

SCL often strive to establish herself as thought leader in the consultancy field. They aim to contribute valuable insights, research, and perspectives through publications and thought leadership content.

Team Development:

Our firm relies on her teams' skills and expertise to deliver exceptional services. Our team development includes attracting and retaining top talent, fostering a collaborative culture, and providing ongoing training and professional development opportunities.

	Collaboration
	Goals
	Planning
	Help

Values

At SCL, our core values serve as the foundation of our organization and guide our actions, decisions, and interactions with our clients, partners, and team members. We firmly believe in:

a

Excellence

We strive for excellence in everything we do. We are committed to delivering top-quality consulting services, going above and beyond to exceed client expectations, and constantly seeking ways to enhance our expertise and offerings.

b

Integrity

Integrity is the bedrock of our consultancy company. We adhere to the highest ethical standards, maintaining honesty, transparency, and confidentiality in all our engagements. Trust is paramount, and we take pride in building long-lasting relationships based on integrity and mutual respect.

c

Collaboration

We believe in the power of collaboration and teamwork. By fostering an inclusive and supportive environment, we leverage the diverse skills and perspectives of our team members to deliver innovative solutions and drive meaningful results. We value open communication, active listening, and the collective wisdom that comes from collaboration.

d

Client-Centric Approach

Our clients are at the heart of everything we do. We prioritize their needs, goals, and success above all else. By truly understanding their unique challenges, we tailor our strategies and solutions to their specific requirements, ensuring tangible value and long-term partnerships.

e

Results Orientation

We are results-driven, focused on delivering outcomes that make a real impact. We set ambitious goals, develop actionable plans, and work diligently to achieve measurable and sustainable results for our clients. We take ownership of our projects and hold ourselves accountable for delivering on our commitments.

These values define who we are as a consultancy company and shape our approach to client engagements, team collaboration, and business practices. By upholding these principles, we aim to create a lasting positive impact on our clients, partners, employees, and society as a whole.

Core Services



Serefaco Consutants Limited (SCL) offers a variety of professional consulting services including:



Project studies

We specialize in conducting project studies that enable our clients to embark on their initiatives with confidence.



Pre-feasibility studies

We recognize the importance of conducting thorough pre-feasibility studies to assist you in making informed decisions and determining the next steps for your project.



Feasibility studies

We specialize in conducting thorough and insightful feasibility studies, providing valuable insights and recommendations to inform your strategic decisions.



Transport studies

We assist organizations in developing transportation plans that align with their goals and objectives. This involves analyzing existing transportation networks, assessing travel demand, and identifying areas for improvement.



Situation Analyses

we specialize in conducting comprehensive situation analyses to help organizations gain a clear understanding of their operating environment and make informed decisions.



Turnkey Projects

We specialize in providing turnkey project solutions to our clients, offering a seamless and hassle-free experience. We collaborate with our clients to understand their specific requirements, goals, and objectives for the project.



Project identification

We specialize in project identification, helping organizations identify and prioritize projects that have the potential to drive growth and deliver valuable outcomes.



Socio-economic studies

We specialize in conducting in-depth socio-economic studies to help organizations understand and manage the social and economic implications of their initiatives.



Monitoring and Evaluation

We work closely with your organization to design customized monitoring and evaluation frameworks that align with your specific goals, objectives, and indicators.



Mid-term Reviews

We specialize in conducting comprehensive mid-term reviews to help organizations monitor their projects' performance and maximize their outcomes.



Tender documentation

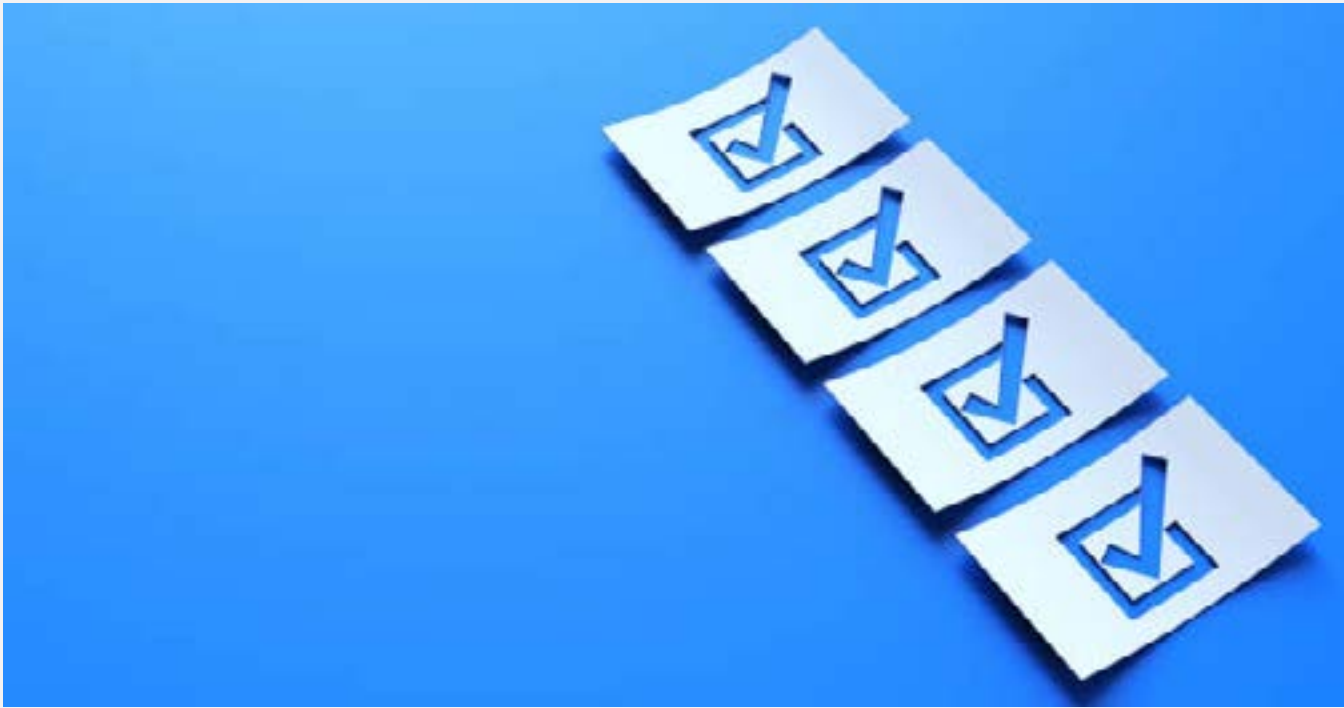
We specialize in preparing comprehensive tender documentation that facilitates fair and transparent procurement processes.



Transaction Advisors

We conduct thorough due diligence assessments to evaluate the financial, operational, and legal aspects of a target company or transaction.

Recent Projects



June 2022 – Mar 2023

Project Name

Special Audit - ESKOM (U) End of Concession on the Nalubaale - Kiira Hydropower Plant 380 MW

Client:

Uganda Electricity Distribution Company Ltd/ GOU



2022 - To date

Project Name

Consultancy Services for Design Review and Construction supervision for upgrading of Luwero - Butalangu road (29.6km) from Gravel to Bitumen Standard

Client:

Uganda National Roads Authority/AfDB/Arab Bank for Economic Development in Africa



2022

Project Name

Consultancy Services to Design Client Centric Islamic Microfinance Products, Capacity Building and Integrated Support Solutions for Local Economic Growth Support

Client:

Ministry of Local Government / Micro Finance Support Centre

Recent Projects



2022 – to date

Project Name

3-Year Framework Contract for Service, Maintenance and Calibration machines and equipment in the Department of Geological Survey and Mines

Client:

Ministry of Energy and Mineral Development - GOUs



2015

Project Name

Developing a robust tele-medicine system for Mulago National Referral Hospital and 3 Kampala Capital City Authority hospitals. AfDB funded project

Client:

Ministry of Health - GOU



Jan 2010 – 2011

Project Name

Pre-Feasibility Study for the Missing Links of the Transport Corridor Djibouti - Libreville

Client:

African Union



2010

Project Name

Study within the ECOWAS region to assess the Feasibility of removing the roaming charges within the ECOWAS sub region.

Client:

Tunis / AfDB



2009 – 2010

Project Name

GIS Mapping, Assessment and Management of Trans-boundary Water Resources in the IGAD Sub-Region - Sub-Region Socio-Economic Assessment and Analysis

Client:

Sahara and Sahel Observatory (OSS) in Tunis on behalf of IGAD Funded by AfDB through African Water Facility

Agriculture & Rural Transformation

Agricultural services encompass a wide range of professional services and expertise aimed at supporting the agricultural industry and helping farmers, agribusinesses, and other stakeholders optimize their operations and achieve sustainable growth. At SCL, we offer a comprehensive suite of agricultural services designed to address the unique challenges and opportunities in the agricultural sector.



Project Name
Design and Supervision of construction of Iték – Okile Rice Project–Lira, Uganda

Agronomic Designs, Design of Farm Workshop Buildings, Design of Boreholes, Design of Laboratories.
Ministry of Agriculture, Animal Industries & Fisheries

June 1990 – Nov 1999

AGRICULTURAL MANAGEMENT

- Crop rehabilitation and development
- Crop production and diversification
- Enterprise mix plans
- Farm design and field layout
- Agricultural support and extension services
- Farm mechanization programmes
- Field surveys
- Topographical surveys and Soil tests
- Preparation of soil maps
- Irrigation system Planning
- Farm infrastructure development

LIVESTOCK & FISHERIES

- Livestock and Fisheries development
- Breeding Improvement programmes
- Veterinary Service
- Livestock improvement and extension programmes
- Disease survey and disease control programmes
- Game management and ranching.
- Farm Management and Economics (financial analysis & cost optimisation)



At SCL, understand the importance of sustainable and responsible livestock management in ensuring food security, promoting rural development, and protecting animal welfare. Our services are tailored to meet the unique needs and objectives of each client, whether they are small-scale farmers, large-scale livestock operations, or organizations involved in livestock-related industries.

Renewable Energy

Renewable energy refers to energy derived from sources that are naturally replenished and have a minimal impact on the environment. As the world seeks to transition to cleaner and more sustainable energy systems, renewable energy plays a crucial role in reducing greenhouse gas emissions, mitigating climate change, and promoting energy independence.



We specialize in providing comprehensive services in Geothermal & hydrogen renewable energy, helping organizations and communities embrace this promising energy solution.

Our expertise in renewable energy encompasses the following key areas:

GEO THERMAL

- Feasibility Studies and Resource Assessment.
- Project Development and Design.
- Financial Analysis.
- Regulatory Compliance and Permitting.
- Technology Evaluation and Selection.
- Project Management and Construction Oversight.
- Performance Monitoring and Optimization

HYDROGEN

- Design, implementation, and optimization of hydrogen production systems
- Infrastructure Development eg refueling stations & distribution networks
- Integration and Conversion Technologies on to existing grid systems
- Market Analysis and Business Models
- Policy and Regulatory Support through analyzing incentives, standards & regulations.
- Research and Development to drive innovation & efficiency



At SCL, believe in the transformative potential of geothermal and hydrogen renewable energy. Our services are tailored to meet the specific needs and objectives of our clients, whether they are seeking to implement geothermal or hydrogen-based systems, explore market opportunities, or navigate the regulatory landscape.

Environmental & Water Resources Management

At SCL, we offer comprehensive environmental & water resources management services to help organizations effectively address their environmental responsibilities and achieve environmental sustainability. We conduct environmental impact assessments to evaluate the potential environmental effects of proposed projects or activities. This involves assessing the impacts on air quality, water resources, land use, biodiversity, and socio-economic factors. We assist organizations in complying with regulatory requirements, identifying mitigation measures, and developing environmental management plans.



ENVIRONMENTAL MANAGEMENT

- Environmental Impact Assessments (EIA)
- Environmental Compliance and Permitting
- Sustainability Planning and Strategy
- Environmental Management Systems (EMS)
- Environmental Monitoring and Reporting
- Training and Capacity Building

WATER RESOURCE MANAGEMENT

- Water Supply and Demand Assessment
- Integrated Water Resources Planning
- Water Infrastructure Design and Management
- Water Quality Management
- Flood and Drought Management
- Water Governance and Policy Support
- Water Conservation and Efficiency

We understand the importance of environmental management in achieving sustainable development. Our team of experts works closely with organizations to develop tailored solutions that mitigate environmental risks, enhance environmental performance, and drive positive environmental change.

Partner with us for your environmental management needs, and let us help you navigate the complexities of environmental stewardship, ensuring a greener and more sustainable future for your organization and the planet.

Planning & Management

At SCL, we specialize in providing comprehensive planning and management services to help organizations optimize their operations and achieve their objectives. We assist organizations in developing strategic plans that align with their mission, vision, and long-term goals. This involves conducting situational analyses, setting objectives, formulating strategies, and identifying key performance indicators. Our strategic planning services help organizations create a roadmap for success and guide decision-making processes.



PLANNING & MANAGEMENT

- Policy and Strategy formulation
- Institutional improvement through management and strategic business plans.
- Technical Assistance.
- Employees enhancement schemes
- Financial Services
- Project supervision services
- Consultancy on Privatisation and Divestiture strategies and implementation
- Development of market oriented organizational systems
- Corporate planning and control
- Acquisition of shares
- Transfer of company shares through public private partnership plans






Project Name

Study to Improve the Operational Efficiencies of Bank of Uganda.

Client:

Bank of Uganda

1993



Project Name

Study and Restructuring of Plan International Uganda.

Client:

Bank of Uganda

June 07, 2023

Infrastructure & Communication

Infrastructure and communication play critical roles in supporting economic development, fostering connectivity, and enabling efficient operations across various sectors. At SCL, we specialize in providing comprehensive services in infrastructure and communication, helping organizations plan, design, implement, and optimize their infrastructure and communication systems.

One of the main areas of service of SCL is provision of policies, strategies and programmes for enhancement of infrastructure development.



INFRASTRUCTURE DEVELOPMENT

- Infrastructure Planning and Design
- Transportation Infrastructure.
- Utilities and Energy Infrastructure.
- Telecommunications and ICT Infrastructure.
- Communication Strategies.
- Project Management and Implementation.
- Sustainability and Resilience.



MARINE

- Port and Harbor Development.
- Coastal and Marine Protection.
- Navigational Infrastructure.
- Offshore Infrastructure.
- Environmental Impact Assessments.
- Project Management and Construction Oversight.
- Sustainable and Resilient Design.



AVIATION

- Airport Planning and Design.
- Air Traffic Management.
- Terminal Operations and Design.
- Runway and Apron Infrastructure.
- Airport Security and Safety
- Airport Infrastructure Management.
- Environmental Sustainability.



RAILWAY

- Railway Planning and Design.
- Track and Alignment Design.
- Railway Stations and Terminals.
- Signaling and Communication Systems.
- Railway Bridges and Tunnels.
- Maintenance and Operations Facilities.
- Safety and Risk Management.

Tourism & Wildlife Conservation

Tourism and wildlife conservation are interconnected and complementary fields that aim to promote sustainable and responsible practices in tourism while safeguarding the natural environment and wildlife. At Serefaco Consultants Limited, we specialize in providing comprehensive services in tourism and wildlife conservation, helping organizations and destinations strike a balance between tourism development and environmental protection.

Our expertise in tourism and wildlife conservation encompasses the following key areas:



ECO-TOURISM & NATURE CONSERVATION

- Sustainable Tourism Planning
- Ecotourism Development
- Protected Area Management
- Wildlife Conservation Programs
- Responsible Tourism Practices
- Tourism Revenue Distribution
- Capacity Building and Training
- Conservation policies and strategies

We understand the delicate balance between tourism development and wildlife conservation. Our services are tailored to meet the unique needs and objectives of each destination, ensuring that tourism activities support wildlife conservation, respect local cultures, and contribute to the sustainable development of communities.



FOREST AND WETLANDS

- Conservation of Natural Forests
- Forest Management plans
- Forest inventory surveys
- Management of Wetland
- Bio-mass & conservation studies
- Utilisation of GIS Technologies in management of the forests.
- Agro-forestry.

Healthcare

Healthcare is a vital sector that focuses on the prevention, diagnosis, treatment, and management of illnesses, injuries, and diseases to promote the well-being of individuals and communities. SCL provides medical health facilities planning, architectural and engineering design.

Epidemiological studies in various service delivery catchment areas to plan and design health facilities bed capacities, equipment requirements, procurement, management of facilities; as well as drug supply chains and policies; pharmaceutical regulatory frame work and implementation plans for the effective and efficient health care service delivery



MEDICAL PLANNING

- Architectural and hospital engineering
- Rehabilitation of hospitals
- Feasibility studies
- Primary health care policy formulations
- Planning and supervision of medical facilities development
- Health care policies, strategies and project management
- Identification and specification of hospital equipment and furniture
- Pharmaceutical regulatory frame work, training and management

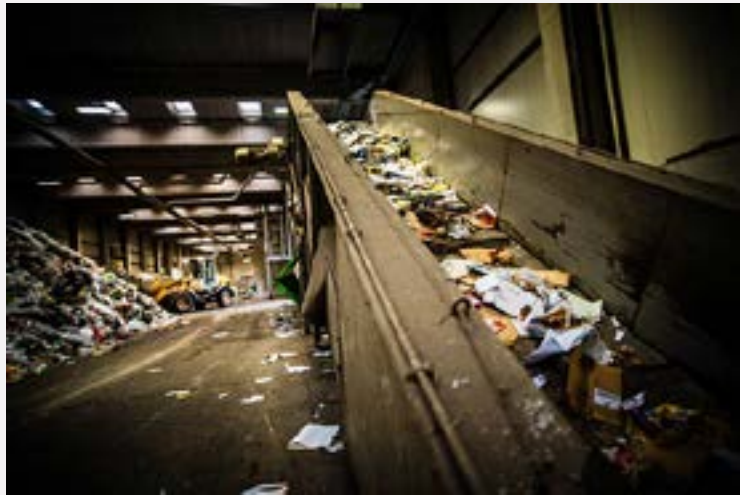


Project Name
Formulation of Pharmaceutical and other Medical Drugs Regulations and Regulatory Framework.

SCL provided solutions to managerial and technical gaps in pharmaceutical supply chain & management for Ministry of Health, Government of South Sudan (GOSS), funded by the World Bank

May 2006
Project Name
Policy review of the role of National Medical Stores in the public and private health care service systems in Uganda.
 Client: PUSRP, Ministry of Finance
 Funded by World Bank

Solid Waste Management



Solid waste management refers to the collection, transportation, processing, recycling, and disposal of solid waste in an environmentally responsible manner. It involves implementing strategies and practices to minimize waste generation, maximize resource recovery, and reduce the negative impacts of waste on public health and the environment. At [Consultancy Company Name], we specialize in providing comprehensive services in solid waste management, helping organizations and communities develop effective and sustainable waste management systems.

Our expertise in solid waste management encompasses the following key areas:

- **Waste Assessment and Planning:** We conduct waste assessments to analyze the composition, volume, and characteristics of solid waste generated..
- **Waste Collection and Transportation:** We assist in designing efficient waste collection, transportation systems and reduce greenhouse gas emissions associated with waste transportation.
- **Recycling and Resource Recovery:** We promote recycling and resource recovery initiatives to divert waste from landfill disposal and conserve valuable resources.
- **Waste Treatment and Disposal:** We provide expertise in waste treatment and disposal options.
- **Public Awareness and Education:** We develop public awareness and education campaigns to promote responsible waste management practices.
- **Regulatory Compliance and Policy Support:** We assist organizations in complying with waste management regulations and developing policies that promote sustainable waste management practices.
- **Monitoring and Performance Evaluation:** We establish monitoring and evaluation systems to track waste management performance, assess progress, and identify areas for improvement.



Engineering

Engineering is a broad field that involves the application of scientific, mathematical, and technical knowledge to design, develop, and build solutions for various challenges in different industries. At SCL, we are experts in providing comprehensive engineering services, employing a multidisciplinary approach to deliver innovative and sustainable solutions for our clients.



Project Name
Study to Determine Allocation of US\$49M of CDC, EIB and World Bank

Client:
Uganda Electricity Board (UEB)

Funded by:
CDC, EIB and World Bank

1992–1996



ELECTRICAL ENGINEERING

- Feasibility Studies.
- Industrial Layout and Design.
- Evaluation and Advisory.
- Planning & technology transfer.
- Solar and Wind Energy.
- Project Design & Management.
- Energy and Power Supply.
- Renewable Energy Sources.
- Hydro Power Stations, Power Transmission.
- Rural Electrification.
- Energy saving technologies.
- GIS technologies.



TELECOMMUNICATION

- Communication Equipment Specification and Procurement
- Legal and Regulatory studies for minerals, Energy and Telecommunication
- Networking strategies, design and implementation



CIVIL (ENGINEERING & CONSTRUCTION)

- Topographical & Cadastral surveys
- Geo-technical & material tests
- Project planning & management
- Turnkey projects
- Housing projects
- Civil engineering systems
- Highways design & supervision
- Marine engineering
- Geological and Mineral Exploration
- Environmental Studies

Transaction Advisory

Transaction advisory services involve providing expert guidance and support to clients throughout the entire lifecycle of a transaction, such as mergers, acquisitions, divestitures, or capital raising activities. At SCL, we specialize in transaction advisory, offering comprehensive services to help clients navigate complex transactions and achieve their strategic objectives.

Our transaction advisory services cover the following key areas:



Project Name
Transaction Advisor for the Divestiture of Kilembe Mines Ltd

Client:
Privatization Unit, Ministry of Finance, Planning and Economic Development Uganda

Funded by:
Government of Uganda

Jan – May 2009

- Due Diligence: We conduct thorough due diligence assessments to evaluate the financial, operational, and legal aspects of a target company or transaction.
- Financial Modeling and Valuation: We assist clients in developing financial models and conducting valuation analyses to determine the fair value of a business or asset.
- Deal Structuring and Negotiation: We provide strategic guidance in structuring transactions to maximize value and mitigate risks.
- Regulatory and Compliance Assistance: We help clients navigate complex regulatory environments and ensure compliance with relevant laws and regulations.
- Integration and Separation Planning: In the case of mergers, acquisitions, or divestitures,

we assist clients in developing integration or separation plans to streamline operations, optimize synergies, and capture value.

- Project Management and Execution: We provide project management support to ensure seamless execution of the transaction.
- Partner with us for your transaction advisory needs, and let us guide you through the complexities of your transaction, helping you achieve your strategic objectives and maximize value.

"Our transaction advisory services are tailored to meet the unique needs of each client and transaction. We leverage our industry knowledge, financial expertise, and extensive network to deliver strategic insights, mitigate risks, and drive successful outcomes".

Projects Portfolio

July 2009	Awarded a contract for Mapping, Assessment & management of Transboundary Water Resources	Sahara Sahel Observatory (OSS)	IGAD
Jan – May 2009	Transaction Advisor for the Divestiture of Kilembe Mines Ltd	Privatization Unit, Ministry of Finance, Planning and Economic Development Uganda	Government, Ministry of Finance Planning and Economic Development
Aug 2008–2011	Review and implementation of Pharmaceutical and other Medical Drugs Regulations and Regulatory Framework	Ministry of Health, Government of South Sudan(GOSS)	WorldBank
July 2007 – March 2009	Mid-Term Review of Road Sector Development Programm (RSDP2) and rollover to RSPD3 (2009/10 – 2018/19)	Ministry Of Finance Planning & Economic Development Uganda	DANIDA
Aug 2007 – Sept 2008	Strategic Investment Planning for National Water and Sewerage Corporation	National Water& Sewerage Corporation Uganda	GTZ/ EU
April 2008 – March 2009	Revision of Water for Production Strategic Investment Plan	Ministry of Water & Environment., Dept of Water Development (DWD) Uganda	DWD. DANIDA
July 2008 –March 2009	Development of Management Systems for Water for Production	Ministry of Water &Environment. Uganda	Gov't, Min of Water & Environ, DANIDA
June 2008 – Jan2009	Evaluation of ICTs in Health Care Service delivery in Uganda, Rwanda and Tanzania	Centre for Disease Control (CDC) – Uganda	USAID/CDC
May 2006	Policy Review of the Role of National Medical Stores in the Public and Private Health Care Systems in Uganda	PUSRP, Ministry of Finance Uganda	World Bank
July 2002 – Sept	Strengthening of Scientific and Technical Teachers Education Project – installation of equipment	Ministry of Education and Sports, Uganda	ADB
1998–1999	Development of a Master Plan for Meat production in Uganda	Ministry of Planning and Economic Development. Uganda	ADB
1998–1998	Small Towns Water and Sanitation Project	Ministry of Lands, Water and Environment Uganda	World Bank
June 1990 – Nov 2002	Olweny Swamp Rice Irrigation Project	Ministry of Agriculture, Animal industries and Fisheries Uganda	ADB
1998	EIA of Bujagali Hydro-Electric Power Project	AES Nile Independent Power Uganda	World Bank

Projects Portfolio

1996–1997	Health Sector Study for the Rehabilitation of Mbarara Regional Hospital	Ministry of Health – Uganda	ADB
1995	Design of a Credit Study for Hoima and Kibaale Districts	Ministry of Local Government Uganda	IFAD/ Belgium survival fund
1994–1995	Secondary Education Policy Studies(Cost and Finance)	Ministry of Education and Sports Uganda	WorldBank
1994	Study and Restructuring of PLAN INTERNATIONAL Uganda	PLAN International Uganda	PLAN International
1993–1994	Feasibility Study for the Rehabilitation and Improvement of PTA sponsored Roads	Ministry of Works Transport and Communication Uganda	ADB
1992–1996	Study to Determine Allocation of US\$ 49M of CDC, EIB and World Bank	Uganda Electricity Board	CDC, EIB and World Bank
1993	Study to Improve the operational Efficiencies of Bank of Uganda	Bank of Uganda	World Bank
1992	Design Works for the 132 KV Transmission Line and substation for Masaka–Mbarara	Uganda Electricity Board	European Investment Bank
1991–1992	Co-operative Agric & Agri-business Support Project	USAID – Uganda	USAID
1991–1992	Masese Women’s Housing Development Project evaluation	DANIDA and African Housing Fund – Uganda	DANIDA
1991	Policy Studies based on 8 Selected planning Units in Government	Ministry of Planning and Economic Development Uganda	World Bank
1990	Design of a Standardised Accounting System for Primary Schools in Uganda	Ministry of Education and Sports, Uganda	World Bank
1990	Managing Policy Reform and Implementation of Divestiture Policy in Uganda	Public Enterprise Reform and Divestiture (PERD) project Uganda	World Bank & Government of Uganda



Contact Us

Uganda

Address

6 Katonga Road, Nakasero
P. O. Box 6916 Kampala Uganda

Contact

Phone : +256 414 255577 / 342397

Fax : +256 414 230691

Email

serefaco@serefacoconsultants.com

serefaco@utlonline.co.ug

Tanzania

Botswana

